

MICHIGAN MELTERS

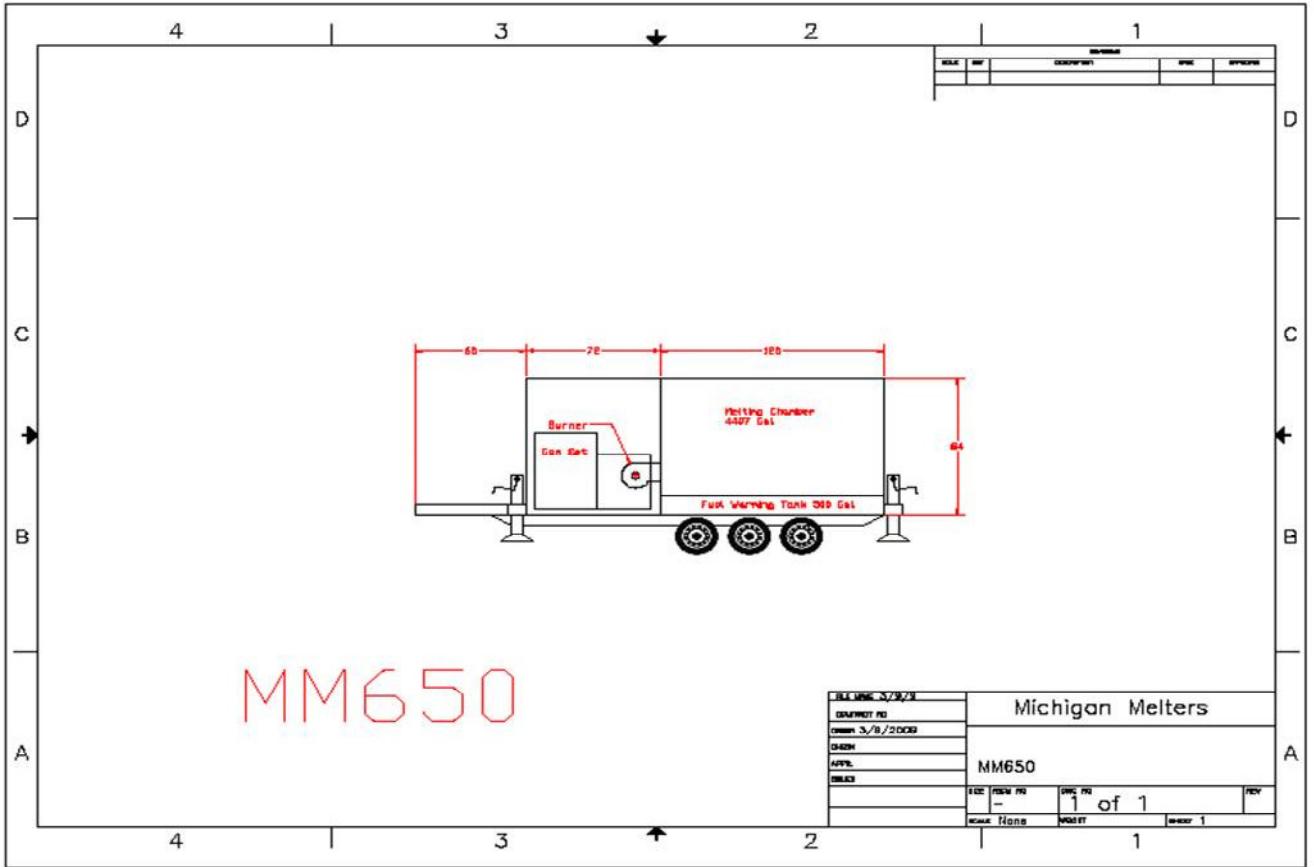
MODEL 650 SNOWMELTER

- ✓ melt rate of 18-20 tons per hour (heavy wet snow/ ice will melt at reduced rate)
 - ✓ 4+ million btu/ 40+ gallons per hour
 - ✓ 500 gallon fuel tank with heaters and warming system
 - ✓ premium two-stage fuel heater and filter
 - ✓ industry-first, diesel-powered pre-heater (*patent pending*)
- ✓ *Kubota Turbo* diesel generator with full pressure lubrication, fuel and oil filters, along with eng pre-heat system
 - ✓ 10 ft. side-loading/ 8 ft. tailgate-loading
- ✓ insulated, heated and lighted machine compartment with fan controlled ventilation
 - ✓ **EJ Potter's** high-efficiency, multiple-chambered heat exchanger
- ✓ maximum heat transfer area for optimal thermal efficiency (*patent pending*)
 - ✓ leveling jacks on all four corners
 - ***no pumps to occlude with parking lot debris*****
 - ***no screens on drains to occlude with debris*****
(*simple splash drainage*)
 - ✓ exterior melter tank doors for clean-out on both sides
- ✓ machine coated with epoxy primer and is painted throughout
 - ✓ standard control box includes simple-to-operate controls
 - ***no fancy digital electronics to fail in the cold*****
 - ✓ mounted on DOT approved trailer
- ✓ DOT approved lights, connectors and sealed wiring harness
 - ✓ pintle hitch

STANDARD MODEL 650 (no optional equipment) \$100,000 per machine

Due to fluctuating steel costs, prices guaranteed for 30 days from time of quote

Limited 3-year warranty, applicable in the United States



MM650

| | | | |
|----------------|----------|------------------|------|
| JBL/MLC 3/2/21 | | Michigan Melters | |
| DRAWING NO. | | MM650 | |
| DATE 3/8/2000 | | REV | |
| DESIGN | | 1 of 1 | |
| APPV. | | DATE | |
| CHECK | | SHEET 1 | |
| DATE | REV. NO. | DATE | REV. |
| DATE | NO. | DATE | NO. |