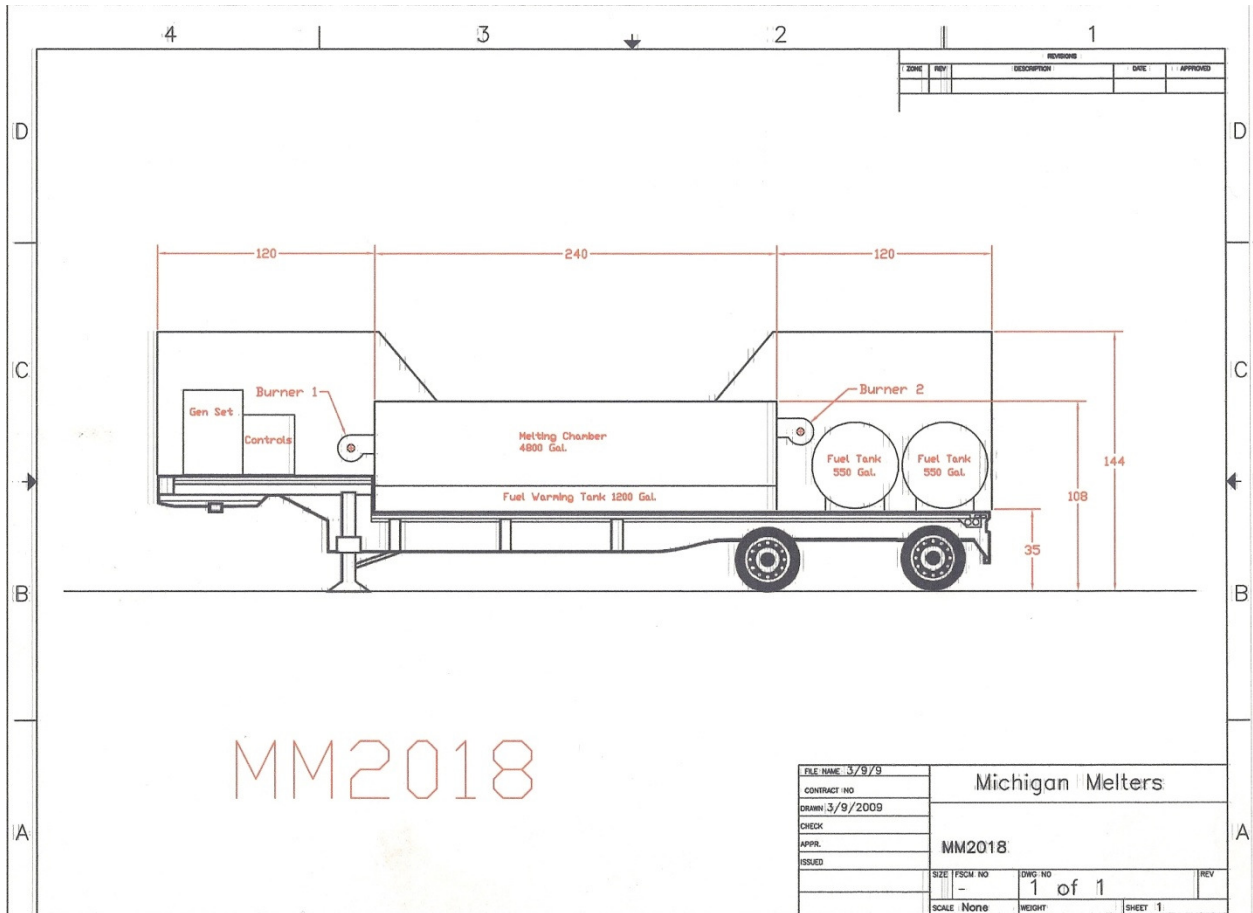


MICHIGAN MELTERS

MM 2018 SNOWMELTER

SPECIFICATIONS

- ✓ 18 million BTU
 - ✓ Two 9 million BTU *Riello* Burners
 - ✓ 2300 gallons fuel--resulting in 17.5 hrs. run time
 - ✓ 1200 gallon fuel warming tank (*patent pending*)
 - ✓ Standard fuel tank heaters
 - ✓ Two premium fuel filters with 2-stage fuel heaters
 - ✓ Industry-first diesel fuel powered pre-heater for easy cold-starting (*patent pending*)
- ✓ *Kubota Turbo* diesel powered gen set with full pressure lubrication, fuel and oil filters
- ✓ Insulated, heated, and lighted machine compartment includes fan-controlled ventilation
- ✓ **EJ Potter** design, high efficiency multiple-chambered, heat exchanger
- ✓ Maximum heat-transfer area for optimal thermal efficiency (*patent pending*)
 - ✓ Snow capacity 70 tons per hour of light snow (*heavy wet snow and ice will melt at a reduced rate*)
- **** **NO PUMPS TO OCCLUDE WITH PARKING LOT DEBRIS** ****
- **** **NO SCREENS ON DRAINS TO OCCLUDE WITH DEBRIS** ****
(*simple splash drainage*)
 - ✓ Exterior melter tank doors for clean-out on both sides
 - ✓ Machine coated with epoxy primer and is painted throughout
 - ✓ Standard control box includes simple-to-operate controls
- ✓ **** **NO FANCY DIGITAL ELECTRONICS TO FAIL IN THE COLD** ****
 - ✓ Mounted on DOT approved trailer
 - ✓ DOT approved lights, connectors and sealed wiring harness
 - ✓ SAE *King Pin* hitch
 - ✓ All wheel air brake, with spring lock on each wheel (ABS)
 - ✓ Leveling jacks at all four corners
 - ✓ Dexter oil bath axles



MODEL MM 2018..... \$300,000 each machine
Due to fluctuating steel costs, prices guaranteed for 30 days from time of quote
Limited 3-year warranty, applicable in the United States